



FLUKE®



Industrial temperature source and measurement products



Index

CD Index

Hart Scientific Product Information

Presentations and Training

[1620 Training](#)
[Dry-Block Application Training](#)
[Hart Scientific Product Training](#)
[Hart Scientific Applications](#)
[Hydra Product Training](#)
[Data Acquisition Markets/Applications](#)

Product Literature

[Process Tools Selection Guide and Hydra Insert](#)
[Hart Distribution Products Catalog Pages](#)
[Hydra-NetDAQ-2680 Detailed Specifications](#)
[2635T Datasheet](#)
[Distributor Brochure](#)
[DewK Ads](#)
[Application Notes](#)

Image Library

[Fluke Product Photography](#)
[Hart Scientific Product Photography](#)
[Logos](#)

Demo Software

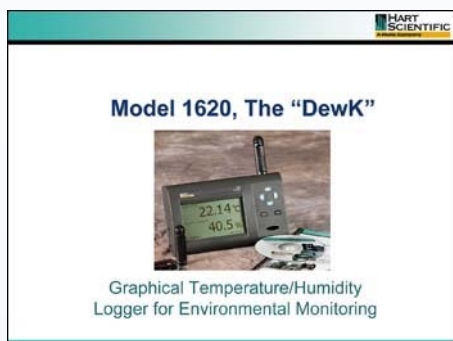
[9930 Interface-it](#)
[9934 LogWare](#)
[9935 LogWare II](#)
[9936 LogWare III](#)
[9938 MET/TEMP II](#)
[Hydra Logger](#)
[Trend Link Demo](#)

Hart Distribution Models and Accessories List

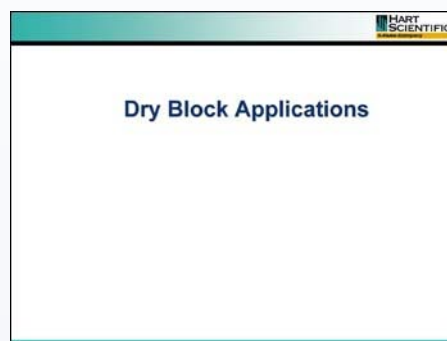


Fluke is pleased to offer a selection of Hart Scientific dry blocks and reference thermometers made specifically for industrial applications. See your local Fluke distributor or go to www.fluke.com/hartscientific.

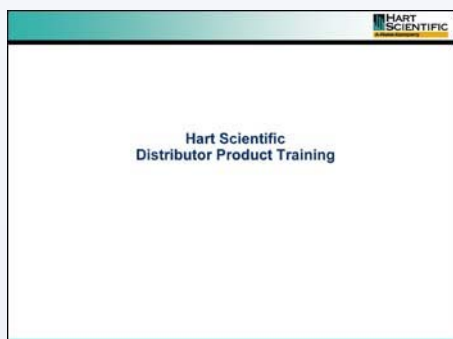
Presentations and Training



1620 Training
[The DewK Product Launch.ppt](#)



Dry Block Applications Training
[Dry Block Applications Training.ppt](#)

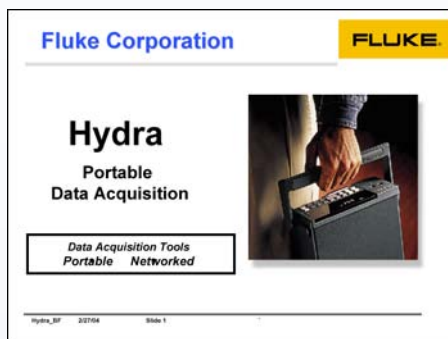


Hart Scientific Distributor Product Training
[Hart Training Dist.ppt](#)



Hart Scientific Applications
[Hart Scientific Applications.ppt](#)

Presentations and Training



Hydra Product Training
[hydra bf 04.ppt](#)



**Data Acquisition
Markets/Applications**
[DAQ_APPS 04.ppt](#)

Product Literature



Process Tools Selection Guide
[1264563 .pdf](#)

Spanish
[1614330 spanish.pdf](#)

French
[1614366 French.pdf](#)



Process Tools Guide Hydra Insert
[Hydra Insert English.pdf](#)

Spanish
[Hydra Insert Spanish.pdf](#)

French
[Hydra Insert French.pdf](#)



Hart Distribution Products Catalog Pages p37-39 Handheld Thermometers Models 1521 and 1522.pdf



Hart Distribution Products Catalog Pages p40-41 Tweeners Models 1502A and 1504.pdf



Hart Distribution Products Catalog Pages p42-44 Chub-E4 Model 1529.pdf



Hart Distribution Products Catalog Pages p61 Secondary Standard PRTs Models 5626 and 5628.pdf

Layout files for Printed Materials located on Disk 2 and 3 are in Macintosh format.

Product Literature



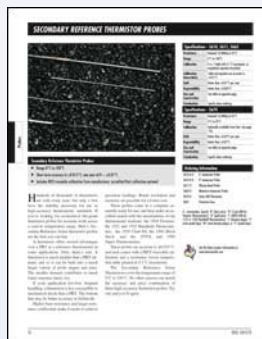
**Hart Distribution
Products Catalog Pages
p62-63 [Secondary
Reference Temperature
Standards Models 5612,
5613, and 5614.pdf](#)**



**Hart Distribution
Products Catalog Pages
p64 [Precision Industrial
PRTs Model 5627.pdf](#)**



**Hart Distribution
Products Catalog Pages
p65 [Fast Response PRTs
Model 5622.pdf](#)**



**Hart Distribution
Products Catalog Pages
p70-71 [Secondary
Reference Thermistor
Probes.pdf](#)**

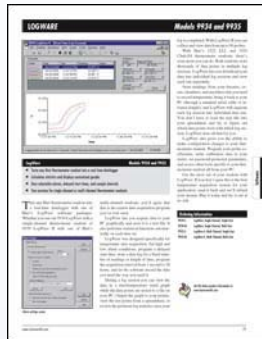


**Hart Distribution
Products Catalog Pages
p74 [Interface-it Model
9930.pdf](#)**



**Hart Distribution
Products Catalog Pages
p75-77 [.MET-TEMP II Model
9938pdf.pdf](#)**

Product Literature



**Hart Distribution
Products Catalog Pages
[p79 LogWare Models 9934
and 9935.pdf](#)**



**Hart Distribution
Products Catalog Pages
[p112-113 Micro-Baths
Models 6102, 7102, and
7103.pdf](#)**



**Hart Distribution
Products Catalog Pages
[p116-117 Handheld Dry-Wells
Models 9100S and
9102S.pdf](#)**



**Hart Distribution
Products Catalog Pages
[p118-119 Industrial Dual-
Block Calibrator Model
9009.pdf](#)**



**Hart Distribution
Products Catalog Pages
[p120-122 Field Dry-Wells
Models 9103, 9140, and
9141.pdf](#)**

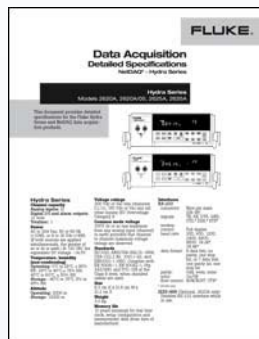


**Hart Distribution
Products Catalog Pages
[p132-133 Portable IR
Calibrators Models 9132
and 9133.pdf](#)**

Product Literature



**Hart Distribution
Products Catalog Pages
p137 Thermocouple Furnace
Model 9150.pdf**



**Hydra-NetDAQ-2680
Detailed Specifications
2139657 Rev A.pdf**



**2635T Datasheet
1266518_DAQ.pdf**



**Distributor Brochure
2162237 .pdf**



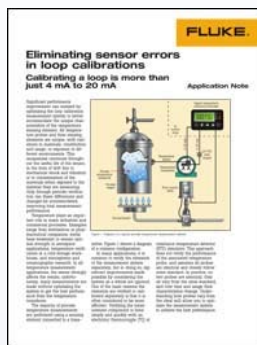
**DewK Ad 1/4 page
01788 Dewk ad.pdf**



**DewK Ad 1-2 page
01787 Dewk ad.pdf**

Layout files for Printed Materials located on Disk 2 and 3 are in Macintosh format.

Product Literature



Eliminating Sensor Errors
[2148146 .pdf](#)



Hart Scientific
Application Note
01 - Food - Triclamp
Calibration.doc



Hart Scientific
Application Note
02 - Industrial - Engine
Cooling.doc



Hart Scientific
Application Note
03 - Industrial - Heat Meter
Calibration.doc



Hart Scientific
Application Note
04 - Oceanography - CTD
Calibration.doc



Hart Scientific
Application Note
05 - Oil & Gas - Drilling.doc

Product Literature



**Hart Scientific
Application Note
06 - Oil & Gas - Herriott
Cell Calibration.doc**



**Hart Scientific
Application Note
07 - Oil & Gas - Kinematic
Viscosity.doc**



**Hart Scientific
Application Note
08 - Oil & Gas - Quality
Transformers.doc**



**Hart Scientific
Application Note
09 - Pharmaceutical -
Reactor Temp Control.doc**



**Hart Scientific
Application Note
10 - Semiconductor- Acid
Bath Calibration.doc**

Layout files for Printed Materials located on this CD in Macintosh format.

Fluke Product Photography



Hydra
Low Resolution
High Resolution



Hydra
Low Resolution
High Resolution



Hydra
Low Resolution
High Resolution



Hydra
Low Resolution
High Resolution

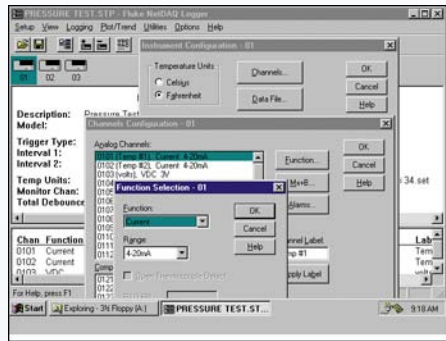


Hydra
Low Resolution
High Resolution



Hydra Family
Low Resolution
High Resolution

Fluke Product Photography



NetDAQ Logger
Low Resolution
High Resolution



Trend Link Screen
Low Resolution
High Resolution

Hart Scientific Product Photography



1502A
Low Resolution
High Resolution



1521 Application
Low Resolution
High Resolution



1521
Low Resolution
High Resolution



1521-1522 with Laptop
Low Resolution
High Resolution



1521-1522
Low Resolution
High Resolution

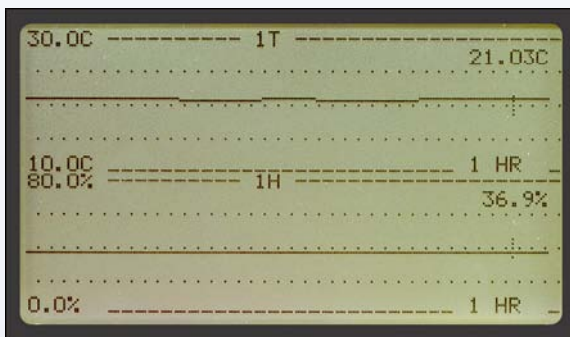
Hart Scientific Product Photography



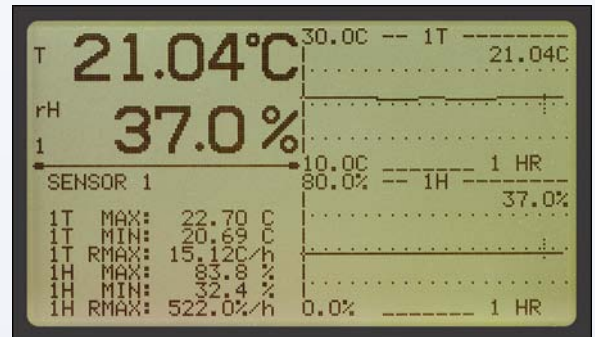
1529
Low Resolution
High Resolution



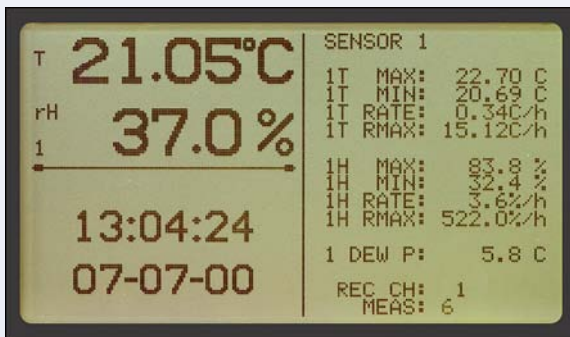
1620 Display
Low Resolution
High Resolution



1620 Display
Low Resolution
High Resolution



1620 Display
Low Resolution
High Resolution



1620 Display
Low Resolution
High Resolution



1620
Low Resolution
High Resolution

Hart Scientific Product Photography



1620 Ad Photo
Low Resolution
High Resolution



5610
Low Resolution
High Resolution



5626 PRT
Low Resolution
High Resolution



5612, 1513, 5614
Low Resolution
High Resolution

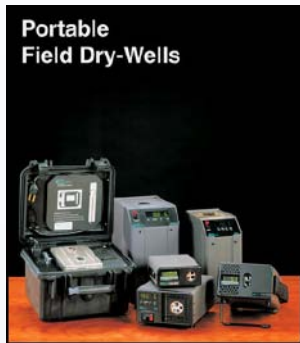


5618A
Low Resolution
High Resolution



5627s
Low Resolution
High Resolution

Hart Scientific Product Photography



**Portable
Field Dry-Wells**

Field dry wells
Low Resolution
High Resolution



6102 Tank
Low Resolution
High Resolution



9009 Blocks
High Resolution



9009 Features
Low Resolution
High Resolution



9009
Low Resolution
High Resolution



9100 Blocks
High Resolution

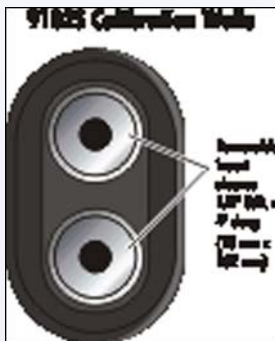
Hart Scientific Product Photography



9100S
Low Resolution
High Resolution



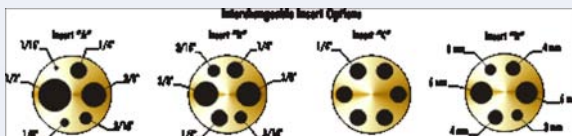
9102S
Low Resolution
High Resolution



9102 Block
High Resolution



9102S-9100S
Low Resolution
High Resolution



9103 9140 9141 Blocks
High Resolution



9132 with IR
Low Resolution
High Resolution

Hart Scientific Product Photography



9132_9133_Raytek
Low Resolution
High Resolution



9132_9133
Low Resolution
High Resolution



9133
Low Resolution
High Resolution



9140_9103_9141
Low Resolution
High Resolution



9141_744
Low Resolution
High Resolution



9141_744
Low Resolution
High Resolution

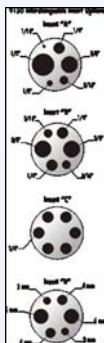
Hart Scientific Product Photography



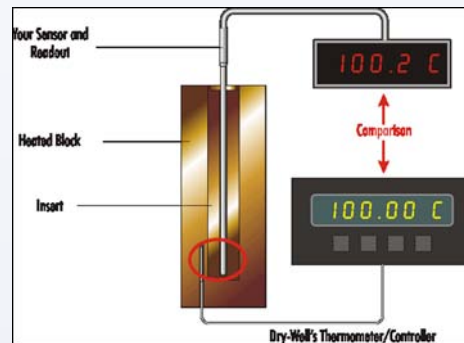
9141_laptop
Low Resolution
High Resolution



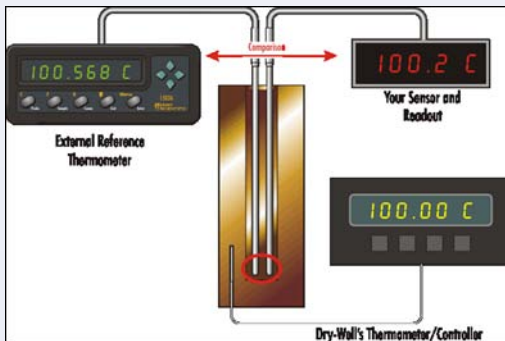
9150
Low Resolution
High Resolution



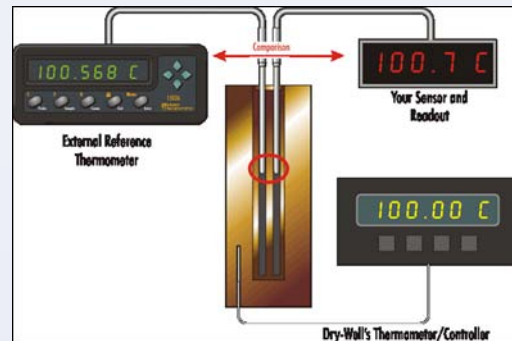
9150 Block
High Resolution



Dry-well Application
Low Resolution
High Resolution

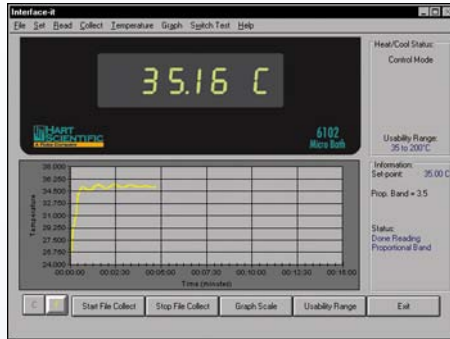


Dry-well Application
Low Resolution
High Resolution

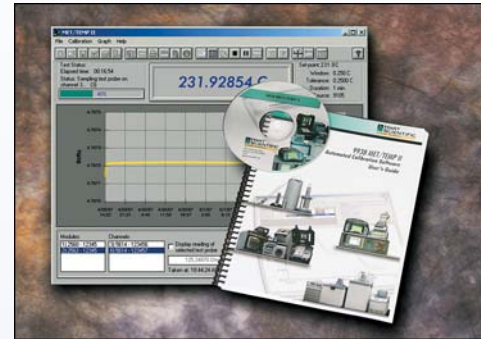


Dry-well Application
Low Resolution
High Resolution

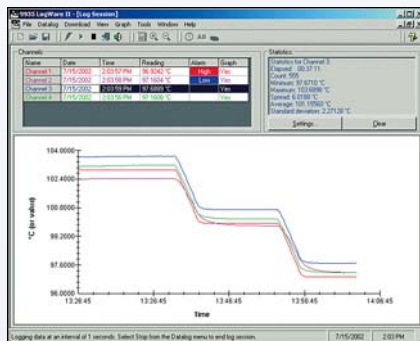
Hart Scientific Product Photography



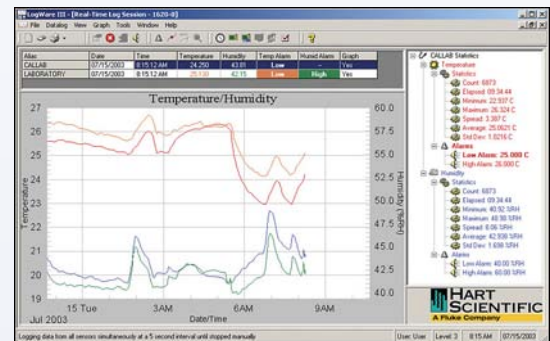
9930 Main Display
Low Resolution
High Resolution



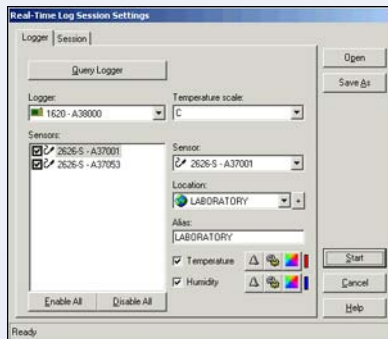
9938_METTEMP II
Low Resolution
High Resolution



9935LogWare II
Low Resolution
High Resolution



LogWare III Real Time
Low Resolution
High Resolution

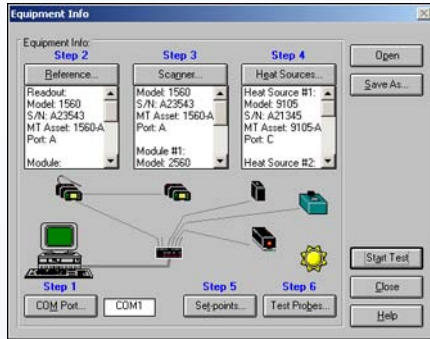


LogWare III Time Settings
Low Resolution
High Resolution

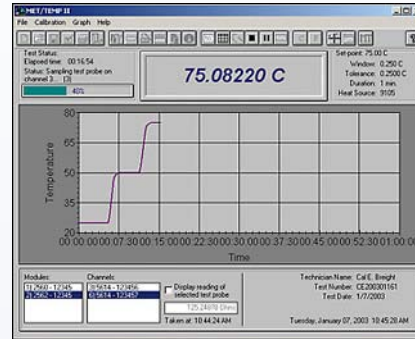


LogWare III User Accounts
Low Resolution
High Resolution

Hart Scientific Product Photography



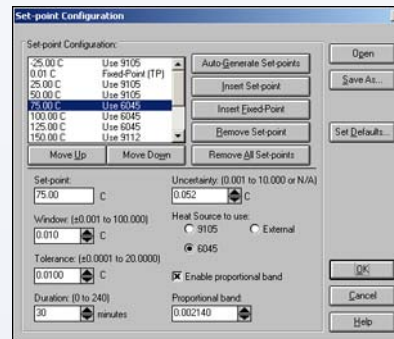
MetTemp Display
Low Resolution
High Resolution



MET_TEMP11_Screen
Low Resolution
High Resolution



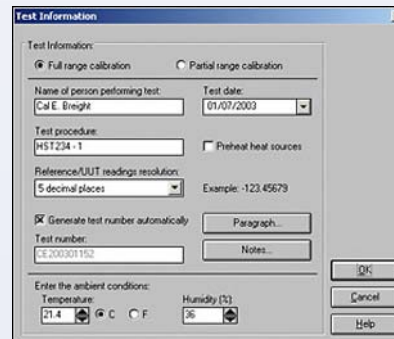
Micro-baths
Low Resolution
High Resolution



Setpoints
Low Resolution
High Resolution



Shortwell
Low Resolution
High Resolution



TEST INFO Screen
Low Resolution
High Resolution

Logos

The Fluke logo consists of the word "FLUKE" in a bold, black, sans-serif font, followed by a registered trademark symbol (®). The text is centered on a solid yellow rectangular background.

Fluke Logo

[Fluke.jpg](#)

[1.875 NB logo_pms.eps](#)

The Hart Scientific logo features a stylized graphic of three vertical bars in shades of green and black to the left of the text "HART SCIENTIFIC" in a bold, black, sans-serif font. Below the text is a yellow rectangular bar containing the text "A Fluke Company" in a smaller, black, sans-serif font.

Hart Scientific Logo

[Hart_Fluke_co_rgb.jpg](#)

[Hart_Fluke_co_cmyk.eps](#)

Demo Software

All software on this CD has the following basic requirement of Windows 98 or higher. If you have purchased your computer within the last five years you should have no installation issues to deal with. If your hard drive does not have enough space to install the programs you will be notified upon installation. In this case you will need to free up space before continuing with the installation.



**Interface-it
Model 9930**

[Software Download](#)

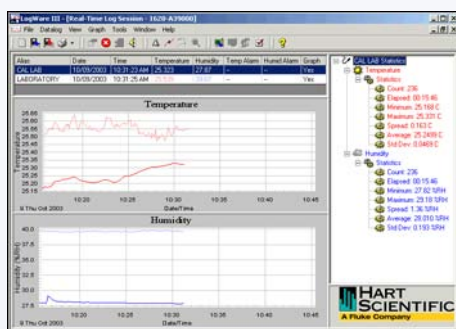
[User Manual](#)

Interface-it Software is distributed free with every Hart dry-well, bath, furnace and controller with an RS-232 interface. This program must be connected to the appropriate equipment in order to function; no demo mode is available.

Demo Software

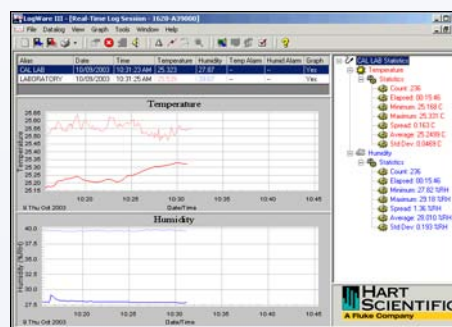
These are limited software programs that will not write data to a data file. However, real time connection and interaction with equipment is allowed as well as immediate viewing.

During the installation process when you are asked for a serial number enter “**DEMO**”. In the DEMO mode the program will immediately begin creating data and displaying this data on the screen. You may stop the program at any time and real equipment may be connected and monitored. In this instance data will not be recorded to the data base.



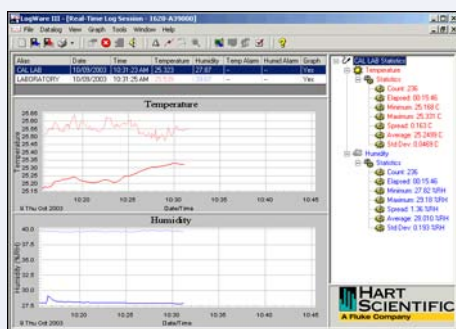
LogWare; Model 9934
(Models: 1502 and 1521, 1522)

[Software Download](#)
[User Manual](#)



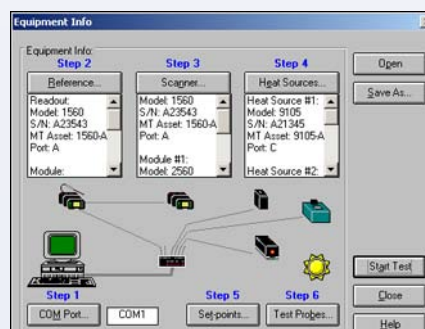
LogWare II; Model 9935
(Models: 1529 all versions)

[Software Download](#)
[User Manual](#)



LogWare III; Model 9936
(Models: 1620)

[Software Download](#)
[User Manual](#)

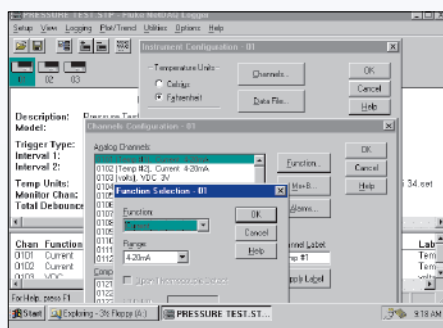


MET/TEMP II Software; Model 9938
(for use with all Hart instruments and Hydra models)

[Software Download](#)
[User Manual](#)

Demo Software

All software on this CD has the following basic requirement of Windows 98 or higher. If you have purchased your computer within the last five years you should have no installation issues to deal with. If your hard drive does not have enough space to install the programs you will be notified upon installation. In this case you will need to free up space before continuing with the installation.

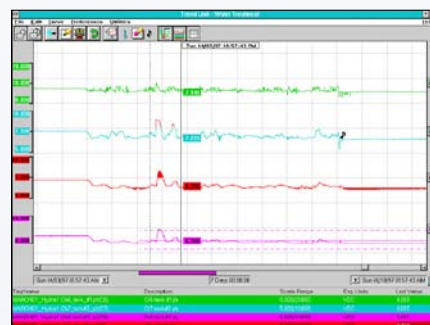


Hydra Logger Software
[Software Download](#)
[User Manual](#)
[Software and Hardware](#)
[Demonstration Guide](#)

This is fully functional software program. The Windows installation process will begin after clicking on “Hydra Logger” on this CD’s interface screen.

For demonstration use place the program in “**simulate logging on start**” under the “**logging**” menu.

For instructions on operating Hydra Logger review the “Hydra and NetDAQ® Demonstration Guide” located on this CD.



Trend Link for Fluke (V3.1.1)
[Software Download](#)
[User Manual](#)
[Software and Hardware](#)
[Demonstration Guide](#)

This program has a repeatable one hour viewing time for demonstration. After one hour the program must be restarted to obtain another hour of viewing.

Installation will begin automatically after clicking on “Trend Link”. For instructions on operating Hydra Logger review the “Hydra & NetDAQ Demonstration Guide” located on this CD.