

EMI SUPPRESSION FERRITE CORES

COMPONENT

PRODUCT IDENTIFICATION



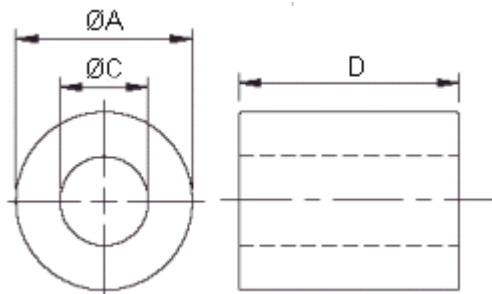
RH 17.5 * 29 * 9.5
A B C D

- A : PRODUCT CODE
- B : A DIMENSION
- C : D DIMENSION
- D : C DIMENSION

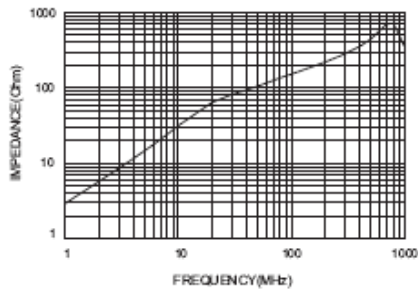
APPLICATIONS

It is used in EMI suppression on round cable.

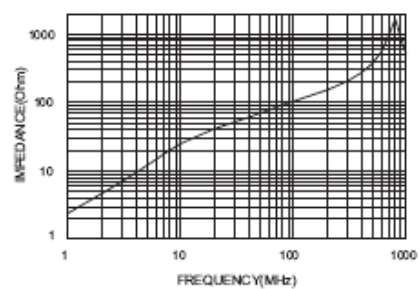
SHAPE



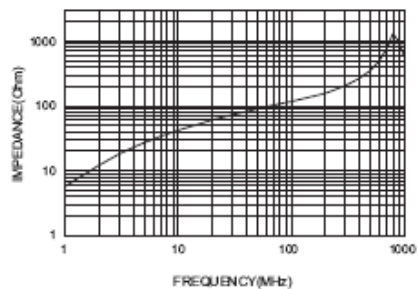
RH12*20*5.6



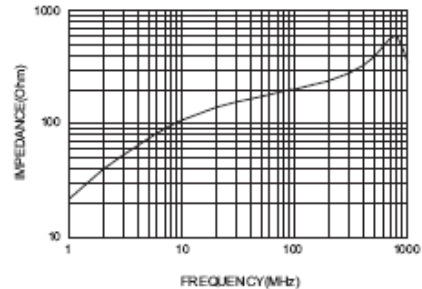
RH4*9.9*2



RH3.5*7.5*1.5



RH15.88*28.57*7.9



EMI SUPPRESSION FERRITE CORES



COMPONENT

DIMENSIONS & CHARACTERISTICS

Core	Dimensions (unit:mm)			Impedance(Ω)	
	A	D	C	25MHz	100MHz
RH 4*5*2	4.00±0.20	5.00±0.30	2.00±0.15	21	40
RH 4*10*2	4.00±0.20	10.00±0.40	2.00±0.15	35	80
RH 5.08*6.4*2.4	5.08±0.30	6.40±0.30	2.40±0.15	25	45
RH 6*6*3	6.00±0.30	6.00±0.30	3.00±2.00	36	50
RH 6*10*3	6.00±0.30	10.00±0.40	3.00±0.20	42	85
RH 7.52*7.54*2.39	7.52±0.30	7.54±0.30	2.39±0.20	45	75
RH 7.8*12.5*4	7.80±0.30	12.50±0.40	4.00±0.20	52	95
RH 8*19.2*3	8.00±0.30	19.20±0.50	3.00±0.20	65	155
RH 8*20*3.5	8.00±0.30	20.00±0.50	3.50±0.20	65	150
RH 9.5*9.5*5.2	9.50±0.30	9.50±0.30	5.20±0.30	42	75
RH 9.53*12.7*4.75	9.53±0.30	12.70±0.40	4.75±0.20	53	95
RH 10.5*20*5.5	10.50±0.30	20.00±0.50	5.50±0.30	90	130
RH 12*15*7.3	12.00±0.40	15.00±0.40	7.30±0.30	45	85
RH 12*15.5*5.6	12.00±0.40	15.50±0.40	5.60±0.30	56	95
RH 12*20*5.6	12.00±0.40	20.00±0.50	5.60±0.30	100	200
RH 12.7*12.7*7.9	12.70±0.40	12.70±0.40	7.90±0.30	45	65
RH 12.7*15*7.9	12.70±0.40	15.00±0.40	7.90±0.30	45	105
RH 14.22*15*6.35	14.22±0.40	15.00±0.40	6.35±0.30	45	95
RH 14.22*28*6.35	14.22±0.40	28.00±1.00	6.35±0.30	135	240
RH 14.22*23.5*7	14.22±0.40	23.50±0.80	7.00±0.30	122	285
RH 14.22*23.5*8	14.22±0.40	23.50±0.80	8.00±0.30	85	108
RH 14.22*28*8.1	14.22±0.40	28.00±1.00	8.10±0.30	90	180
RH 14.22*28.5*6.7	14.22±0.40	28.50±1.00	6.70±0.30	120	220
RH 15.24*28*8	15.24±0.40	28.00±1.00	8.00±0.30	110	210
RH 15.65*28.5*7	15.65±0.40	28.50±1.00	7.00±0.30	150	260
RH 16*17.5*4.3	16.00±0.40	17.50±0.50	4.30±0.20	145	255
RH 16*17*9	16.00±0.40	17.50±0.50	9.00±0.30	65	155
RH 17*28*9.5	17.00±0.50	28.00±1.00	9.50±0.30	110	190
RH 17.5*12.7*9.5	17.50±0.50	12.70±0.40	9.50±0.30	45	90
RH 17.5*13.5*9.5	17.50±0.50	13.50±0.40	9.50±0.30	55	90
RH 17.5*28.5*9.5	17.50±0.50	28.50±1.00	9.50±0.30	110	189
RH 17.5*35*9.5	17.50±0.50	35.00±1.00	9.50±0.30	120	225
RH 17.5*28.5*10	17.50±0.50	28.50±1.00	10.00±0.30	95	125
RH 17.5*28.5*10.7	17.50±0.50	28.50±1.00	10.70±0.30	90	167
RH 18.5*28.5*11	18.50±0.50	28.50±1.00	11.00±0.40	95	180
RH 21*11.9*13.2	21.00±0.50	11.90±0.50	13.20±0.40	65	95
RH 25.9*29*12.7	25.90±1.00	29.00±1.00	12.70±0.40	125	220