

TOROIDAL CORES/T SERIES

COMPONENT

PRODUCT IDENTIFICATION



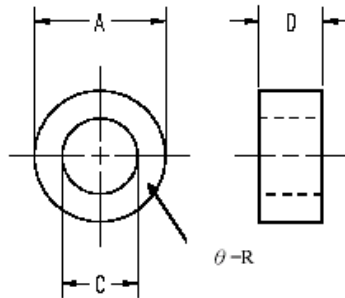
T 6 * 3 * 3
 A B C D

A : PRODUCT CODE
 B : A DIMENSION
 C : B DIMENSION
 D : C DIMENSION

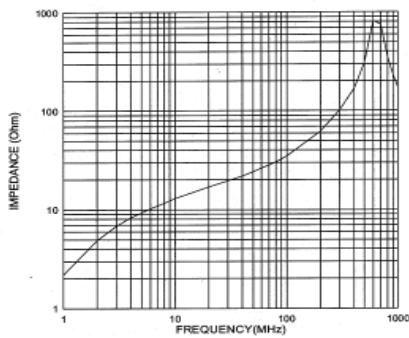
APPLICATIONS

It is used in Fly-back Transformers of CRT and air-filters, etc.

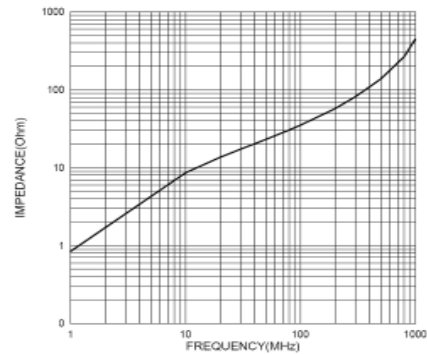
SHAPE



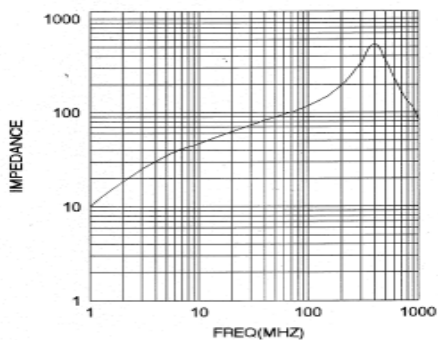
T 4*2*3



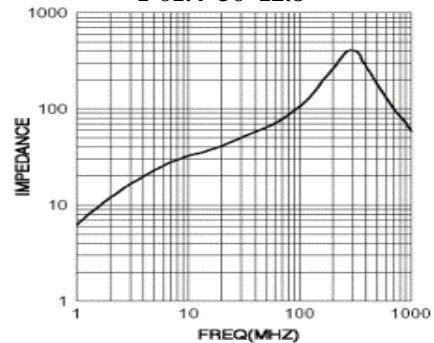
T 10*6*4



T 16.5*8.2 *13



T 61.4*36*12.8



TOROIDAL CORES/T SERIES

COMPONENT

DIMENSIONS & CHARACTERISTICS

ITEM	Unit : mm			Impedance (Ω) min.		AL (nH)
	$\varnothing A$	$\varnothing C$	D	25MHz	100MHz	
T 3.2*1.25*3	3.2 \pm 0.15	1.25 \pm 0.1	3 \pm 0.2	-	-	368
T 4*2*3	4 \pm .2	2 \pm 0.15	3 \pm .2	-	16	600
T 4.1*2*3	4.1 \pm 0.2	2 \pm 0.15	3 \pm .2	-	15	620
T 4.5*1.5*3.5	4.5 \pm 0.2	1.5 \pm 0.15	3.5 \pm 0.2	70	100	490
T 5*1.5*4	5 \pm 0.2	1.5 \pm 0.15	4 \pm 0.3	-	-	1292
T 5*3*2	5 \pm 0.2	3 \pm 0.2	2 \pm 0.2	-	-	140
T 5.08*2.36*4.8	5.08 \pm 0.2	2.36 \pm 0.15	4.8 \pm 0.3	310	490	491
T 6*1.8*3	6 \pm 0.2	1.8 \pm 0.15	3 \pm .2	-	-	453
T 6*3*2	6 \pm 0.2	3 \pm 0.2	2 \pm 0.2	-	-	400
T 6*3*3	6 \pm 0.2	3 \pm 0.2	3 \pm 0.2	-	-	10
T 7*3.5*4	7 \pm 0.2	3.5 \pm 0.2	4 \pm 0.3	15	45	373
T 7.62*3.18*4.78	7.62 \pm 0.2	3.18 \pm 0.2	4.78 \pm 0.3	25	50	1179
T 8*4*4	8 \pm 0.2	4 \pm 0.2	4 \pm 0.3	-	-	800
T 9*5*3	9 \pm 0.3	5 \pm 0.25	3 \pm 0.2	15	45	514
T 9.15*5.02*4.7	9.15 \pm 0.3	5.02 \pm 0.25	4.7 \pm 0.3	-	35	548
T 9.4*6.3*6.2	9.4 \pm 0.3	6.3 \pm 0.3	6.2 \pm 0.3	10	25	343
T 9.5*4.75*4.8	9.5 \pm 0.3	4.75 \pm 0.2	4.8 \pm 0.3	-	30	448
T 9.5*4.79*5	9.5 \pm 0.3	4.79 \pm 0.2	5 \pm 0.3	-	-	461
T 9.5*5.02*5	9.5 \pm 0.3	5.02 \pm 0.3	5 \pm 0.3	20	35	432
T 9.5*5*5	9.5 \pm .3	5 \pm 0.3	5 \pm 0.3	20	35	434
T 9.53*4.75*3.2	9.53 \pm 0.3	4.75 \pm 0.25	3.2 \pm 0.2	-	50	43
T 9.53*5.02*4.8	9.53 \pm 0.3	5.02 \pm 0.25	4.8 \pm 0.3	-	30	595
T 9.58*6.4*5	9.58 \pm 0.3	6.4 \pm 0.3	5 \pm 0.3	-	-	279
T 9.6*6.4*7.4	9.6 \pm 0.3	6.4 \pm 0.3	7.4 \pm 0.3	-	-	414
T 9.65*5.02*4.83	9.65 \pm 0.3	5.02 \pm 0.25	4.83 \pm 0.2	10	30	-
T 9.65*5*5.05	9.65 \pm 0.3	5 \pm 0.2	5.05 \pm 0.3	21	43	449
T 9.8*6.3*7.4	9.8 \pm 0.3	6.30 \pm 0.3	7.4 \pm 0.3	-	45	450
T 10*4*6	10 \pm 0.3	4 \pm 0.2	6 \pm 0.3	-	-	720
T 10*5.1*9	10 \pm 0.3	5.1 \pm 0.25	9 \pm 0.3	30	60	643
T 10*5*5	10 \pm 0.3	5 \pm 0.25	5 \pm 0.3	25	55	467
T 10*6*4	10 \pm 0.3	6 \pm 0.3	4 \pm 0.3	-	-	600
T 10*7*5	10 \pm 0.3	7 \pm 0.3	5 \pm 0.3	15	40	247
T 12*6*6	12 \pm 0.3	6 \pm 0.3	6 \pm 0.3	-	-	-
T 12*7*5.5	12 \pm 0.3	7 \pm 0.3	5.5 \pm 0.3	15	40	405
T 12.7*7.9*6.35	12.7 \pm 0.3	7.9 \pm 0.3	6.35 \pm 0.3	21	42	414
T 13*7*3	13 \pm 0.3	7 \pm 0.3	3 \pm 0.2	15	30	252
T 13*7.3*12.7	13 \pm 0.3	7.3 \pm 0.3	12.7 \pm 0.4	-	-	-
T 13*8*12.7	13 \pm 0.3	8 \pm 0.3	12.7 \pm 0.3	-	30	847
T14*8*7	14 \pm 0.4	8.7 \pm 0.3	7 \pm 0.3	25	45	458

TOROIDAL CORES/T SERIES



COMPONENT

ITEM	Unit : mm			Impedance (Ω) min.		AL (nH)
	$\varnothing A$	$\varnothing C$	D	25MHz	100MHz	
T 14.2*4.5*6	14.2±0.4	4.5±0.4	6±0.3	35	85	1245
T 14.2*6.35*13.8	14.2±0.4	6.35±0.3	13.8±0.4	60	100	1476
T 14.5*10.5*8	15.7±0.4	10.5±0.4	8±0.3	15	45	358
T 15.7*10*4.3	15.9±0.4	10±0.4	4.3±0.3	15	35	267
T 15.9*7.9*14.3	15.9±0.4	7.9±0.3	14.3±0.4	60	100	1346
T 16*8*13	16±0.4	8±0.3	13±0.4	45	90	1213
T 16*10*5	16±0.4	10±0.4	5±0.3	-	-	323
T 16*12*8	16±0.4	12±0.4	8±0.3	20	30	686
T 16.5*8.2*13	16.5±0.4	8.2±0.3	13±0.4	45	100	1223
T 17.4*9.6*15	17.4±0.4	9.6±0.3	15±0.4	-	-	1213
T 17.5*9.5*12.7	17.5±0.4	9.5±0.3	12.7±0.4	45	70	1054
T 18*7*3	18±0.5	7±0.3	3±0.2	-	-	106
T 18.3*10*10	18.3±0.5	10±0.4	10±0.4	30	80	-
T 18.4*9.5*15	18.4±0.5	9.5±0.3	15±0.4	50	85	1340
T 18.4*9.6*12	18.4±0.5	9.6±0.3	12±0.4	45	80	1056
T 18.7*10.2*17	18.7±0.5	10.2±0.4	17±0.4	45	80	1400
T 20*10*10	20±0.6	10±0.4	10±0.4	40	75	933
T 20.7*12*14	21.7±0.6	12±0.4	14±0.4	140	250	980
T 21*13.2*12	21±0.6	13.2±0.4	12±0.4	30	65	776
T 21.2*12.7*6.1	21.2±0.6	12.7±0.4	6.1±0.3	30	65	428
T 22*13.5*8	22±0.6	13.5±0.4	8±0.3	30	60	536
T 22*14*8	22±0.6	14±0.4	8±0.3	30	60	498
T 22.1*13.7*6.35	22.1±0.6	13.7±0.4	6.35±0.3	15	45	-
T 22.5*13.8*6.4	22.5±0.6	13.8±0.4	6.4±0.3	15	45	-
T 22.5*13.8*12.8	22.5±0.6	1.8±0.4	12.8±0.4	40	80	-
T 23*6.35*13.5	23±0.6	6.35±0.3	13.5±0.4	-	-	1809
T 23*11*14	23±0.6	11±0.4	14±0.4	60	110	1384
T 23*13.5*6.35	23±0.6	13.5±0.4	6.35±0.3	15	45	463
T23.5*12.6*9.4	23.5±0.6	12.6±0.4	9.4±0.3	60	120	1703
T 24*11*14	24±0.6	11±0.4	14±0.4	45	85	1456
T 24*14*11	24±0.6	14±0.4	11±0.4	35	63	-
T 25*15*8.1	25±0.6	15±0.4	8.1±0.3	-	-	-
T 25*15*12	25±0.6	15±0.5	12±0.4	35	80	467
T 28*16*13	28±0.6	16±0.3	13±0.4	40	80	993
T 29*19*7.5	29±0.6	19±0.5	7.5±0.3	20	50	438
T 29*19*8.1	29±0.6	19±0.5	8.1±0.3	-	-	-
T 31*19*8	31±0.9	19±0.5	8±0.3	25	60	-
T 31.75*19.05*16	31.75±0.8	19.05±0.5	16±0.4	50	90	-
T 31.75*19.05*22.5	31.75±0.8	19.05±0.8	22.5±0.6	60	90	-
T 35.6*23*12.7	35.6±0.8	23±0.6	12.7±0.4	25	90	~765
T 35.6*25.4*7.5	35.6±0.8	25.4±0.6	7.5±0.2	25	90	351
T 40.6*27.5*15	40.6±1	27.5±0.6	15±0.4	35	85	808
T 40.6*27.15	40.6±1	27±0.6	15±0.4	35	85	845
T 21*15*12	21.0±0.6	15±0.5	12±0.4	25	50	-
T 61.4*36*12.8	61.4±1.3	36±0.75	12.8±0.4	45	80	-